



CORRECTIONS : BW2 ATS point added - Radial turn interception KSA 4B - Magnetic variation.

STANDARD ARRIVAL CHART
INSTRUMENT (STAR) - ICAO

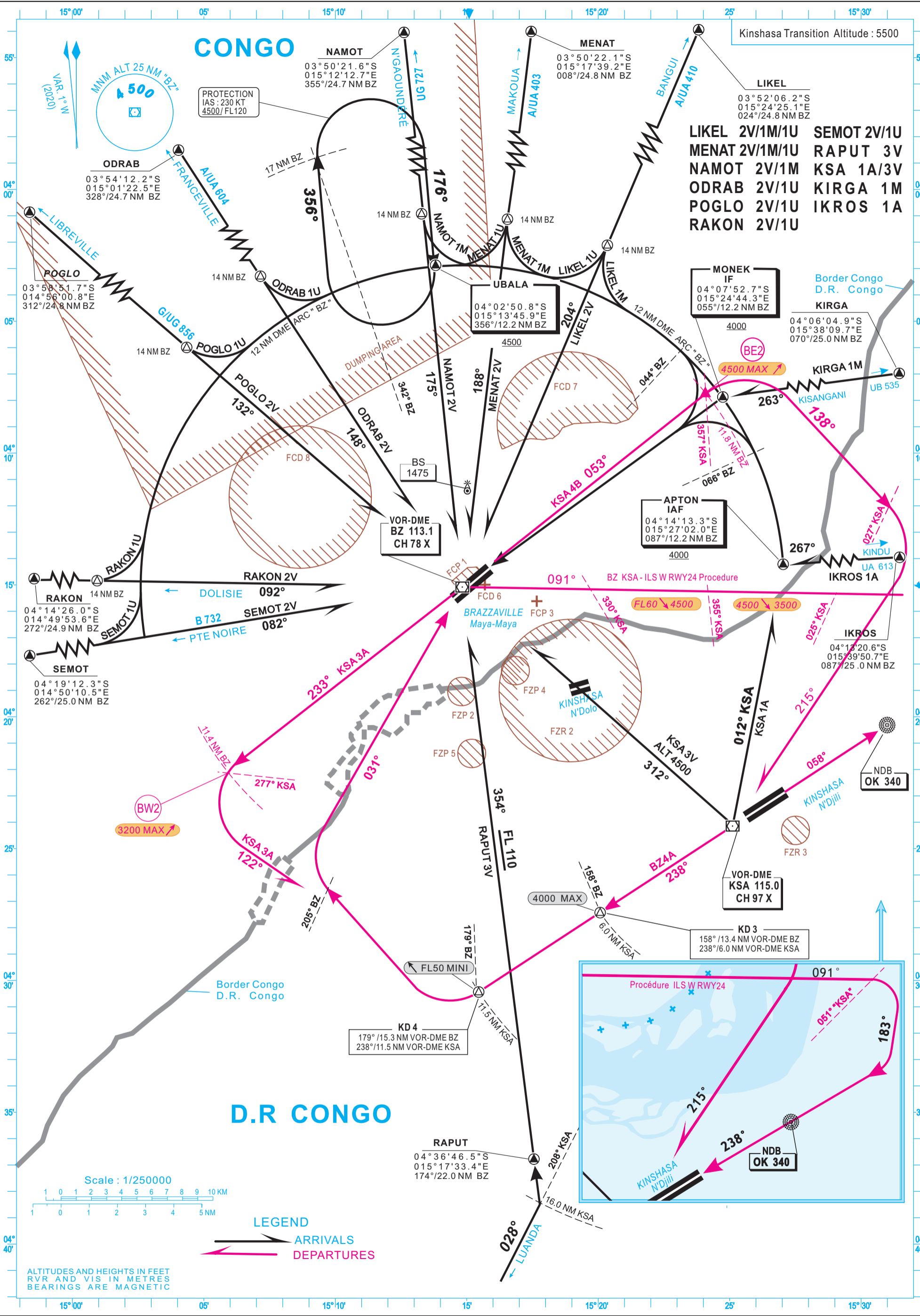
CONVENTIONAL NAVIGATION

TRANSITION ALTITUDE
4500

APP 121.1
TWR 118.7

BRAZZAVILLE / Maya-Maya (FCBB)
RWY 23

55° 54° 03' 04' 05' 06' 07' 08' 09' 10' 11' 12' 13' 14' 15' 16' 17' 18' 19' 20' 21' 22' 23' 24' 25' 26' 27' 28' 29' 30' 31' 32' 33' 34' 35' 36' 37' 38' 39' 40' 41' 42' 43' 44' 45'



LIKEL 2V/1M/1U
 MENAT 2V/1M/1U
 NAMOT 2V/1M
 ODRAB 2V/1U
 POGLO 2V/1U
 RAKON 2V/1U
 SEMOT 2V/1U
 RAPUT 3V
 KSA 1A/3V
 KIRGA 1M
 IKROS 1A

Kinshasa Transition Altitude : 5500

APT
 IAF
 04° 14' 13.3" S
 015° 27' 02.0" E
 087°/12.2 NM BZ
 4000

APRON
 BRAZZAVILLE
 Maya-Maya
 FCP 3

KD 4
 179°/15.3 NM VOR-DME BZ
 238°/11.5 NM VOR-DME KSA

KD 3
 158°/13.4 NM VOR-DME BZ
 238°/6.0 NM VOR-DME KSA

NDB OK 340

NDB OK 340

D.R CONGO

CONGO

MINM ALT 25 NM "BZ"
500

ODRAB
 03° 54' 12.2" S
 015° 01' 22.5" E
 328°/24.7 NM BZ

NAMOT
 03° 50' 21.6" S
 015° 12' 12.7" E
 355°/24.7 NM BZ

MENAT
 03° 50' 22.1" S
 015° 17' 39.2" E
 008°/24.8 NM BZ

LIKEL
 03° 52' 06.2" S
 015° 24' 25.1" E
 024°/24.8 NM BZ

POGLO
 03° 58' 51.7" S
 014° 56' 00.8" E
 312°/24.8 NM BZ

UBALA
 04° 02' 50.8" S
 015° 13' 45.9" E
 356°/12.2 NM BZ
 4500

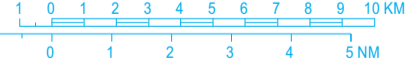
MONEK IF
 04° 07' 52.7" S
 015° 24' 44.3" E
 055°/12.2 NM BZ
 4000

RAKON
 04° 14' 26.0" S
 014° 49' 53.6" E
 272°/24.9 NM BZ

SEMOT
 04° 19' 12.3" S
 014° 50' 10.5" E
 262°/25.0 NM BZ

IKROS
 04° 13' 20.6" S
 015° 39' 50.7" E
 087°/25.0 NM BZ

Scale : 1/250000



LEGEND



ALTITUDES AND HEIGHTS IN FEET
RVR AND VIS IN METRES
BEARINGS ARE MAGNETIC

05AD2-FCBB-STAR-VORDME23

AERONAUTICAL INFORMATION SERVICE - ASEENA

AMDT 06/22

16 JUNE 2022